

# 400 SERIES

## ATTACHMENTS



Brush



Auger



Backhoe



Cold planer



Dozer blade



Hammer



You can deliver even more on the job site with the Case 400 Series Skid Steers. Using the extensive selection of attachments available in the market you can increase versatility and value to your job.

### OPTIONAL HIGH-FLOW AUXILIARY HYDRAULICS

High-flow auxiliary hydraulics provide the power needed to maximize the productivity of high-flow attachments. A high flow auxiliary hydraulic system which delivers 126 l/min and 136 l/min at a pressure of 210 bars, is available respectively for the 435 and 445.



**OPTIONAL ELECTRIC AUXILIARY HYDRAULICS**

The electric auxiliary hydraulics control provides easy, finger tip control of your attachments. You can even add a second front auxiliary hydraulics package to control multi-function attachment such as a cold planer.

**TYRE CHOICES**

Case also offers a wide variety of tyres or tracks for optimal performance in any application.

**BUCKETS CHOICES**

A large selection of buckets adds to the impressive versatility of the 400 Series Skid Steers. Bucket options include short lip buckets and long lip buckets, regular-duty and heavy duty dirt buckets, utility and light material buckets.



Snow blower



Trencher



Tree spade



Stump grinder

# 435-445 vertical lift

## STANDARD EQUIPMENT

- No-tools tilt ROPS-FOPS cab
- Operator safety restraint bar that locks out the controls
- Seat with presence detector
- Retractable seat belt
- Hand throttle + foot throttle
- Digital hourmeter
- LED bar-graph fuel indicator
- Visual and audible alarms
- Halogen working lights 2 front, 1 rear (+ 2 red tail lamps)
- Rear window with escape provision
- Socket 12 volt
- Glass roof window
- Self applied hydraulic release brake
- Auxiliary hydraulic system with ISO quick couplers
- Servo-hydrostatic controls
- Rear towing and transport hooks
- Lockable service access hood
- Single point daily servicing
- Manual coupler
- Loader safety strut
- Lift hooks

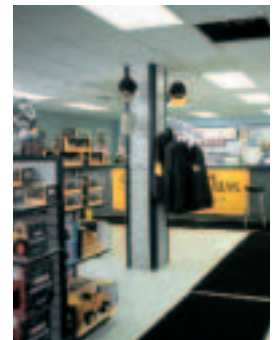
## POSSIBLE ADDITIONAL OPTIONS

- 2 speeds
- Battery shut-off
- Front electrics for attachments
- Sliding side windows
- De-luxe heater
- Front door with wiper and washer
- Rear view mirror
- Rotary beacon
- Back up alarm
- Turn signals
- Engine block heater (240 Volt supply)
- Super counterweight on 435

Standard and optional equipment may vary by country



SERVICE & SUPPORT  
THE CASE DEALER  
YOUR PROFESSIONAL PARTNER



### WORLDWIDE CASE CONSTRUCTION EQUIPMENT CONTACT INFORMATION

**EUROPE/AFRICA/MIDDLE EAST:**  
CENTRE D'AFFAIRES EGB  
5, AVENUE GEORGES BATAILLE - BP 40401  
60671 LE PLESSIS-BELLEVILLE - FRANCE

**NORTH AMERICA/MEXICO:**  
700 STATE STREET  
RACINE, WI 53404 U.S.A.

**LATIN AMERICA:**  
AV. GENERAL DAVID SARNOFF 2237  
32210 - 900 CONTAGEM - MG  
BELO HORIZONTE BRAZIL

**ASIA PACIFIC:**  
UNIT 1 - 1 FOUNDATION PLACE - PROSPECT  
NEW SOUTH WALES - 2148 AUSTRALIA

**CHINA:**  
No. 29, INDUSTRIAL PREMISES, No. 376,  
DE BAO ROAD, WAIGAOQIAO FTZ, PUDONG,  
SHANGHAI, 200131, P.R.C.

**NOTE:** Standard and optional fittings can vary according to the demands and specific regulations of each country. The illustrations may include optional rather than standard fittings - consult your Case dealer. Furthermore, CNH reserves the right to modify machine specifications without incurring any obligation relating to such changes.

**CNH UK Ltd.**  
Armstrong House  
The Finningley Estate  
Hayfield Lane  
Doncaster  
DN9 3XA  
Fax +44 (0)1302 802126

Conforms to directive 98/37/CE



[www.casece.com](http://www.casece.com)

**CASE**  
PROFESSIONAL PARTNER



**CASE IS A BRAND OF CNH.**  
CNH: THE TOTAL SOLUTIONS CHOICE FOR YOUR SPECIFIC BUSINESS NEEDS.