

CASE
CONSTRUCTION

THE RANGE



**LA GAMMA / LA GAMME /
LA GAMA / PRODUKTPROGRAMM**

COMPACT LINE







MINI-EXCAVATORS / MINI ESCAVATORI / MINI-PELLES / MINIBAGGER / MINIEXCAVADORAS



CX15B

Series 2 one speed canopy



CX15B Series 2



CX17B

ZTS in canopy version



CX18B Series 2



CX20B^{ZTS}/CX22B^{ZTS}*



CX27B^{ZTS}



CX31B^{ZTS}



CX36B^{ZTS}



CX40B^{ZTS}



CX50B^{ZTS}

* Cab only - ZTS - Solo con cabina - ZTS - Cabine seulement - ZTS - Nur Kabine - ZTS - Sólo cabina - ZTS

SKID STEER LOADERS / PALE COMPATTE / CHARGEUSES COMPACTES / KOMPAKTLADER / MINICARGADORAS



410 Series 3



420 Series 3



430 Series 3



435 Series 3
vertical lift



440 Series 3



445 Series 3
vertical lift



420CT Series 3



440CT Series 3



445CT Series 3
vertical lift

BACKHOE LOADERS / TERNE / CHARGEUSES PELLETEUSES / BAGGERLADER / RETROCARGADORAS



580 Super R
Series 3



580 Super R +
Series 3



590 Super R
Series 3



695 Super R
Series 3

COMPACT WHEEL LOADERS / PALE GOMMATE COMPATTE / PETITES CHARGEUSES SUR PNEUS / KLEINE RADLADER / MIDI CARGADORAS DE NEUMÁTICOS



21E Series 3



121E' Series 3



221E' Series 3



321E' Series 3

*Available in high speed version (HS) - Disponibile nella versione high speed (HS) - Disponible en version grande vitesse - Auch als Hochgeschwindigkeitsversion erhältlich - Disponible en versión de alta velocidad

TELESCOPIC HANDLERS / MOVIMENTATORI TELESCOPICI / CHARGEUSES TELESCOPIQUES / TELESKOPLADER / MANIPULADORAS TELESCÓPICAS



TX130-33 turbo



TX130-40 turbo



TX130-45 turbo



TX140-45 turbo



TX170-45 turbo

HEAVY LINE





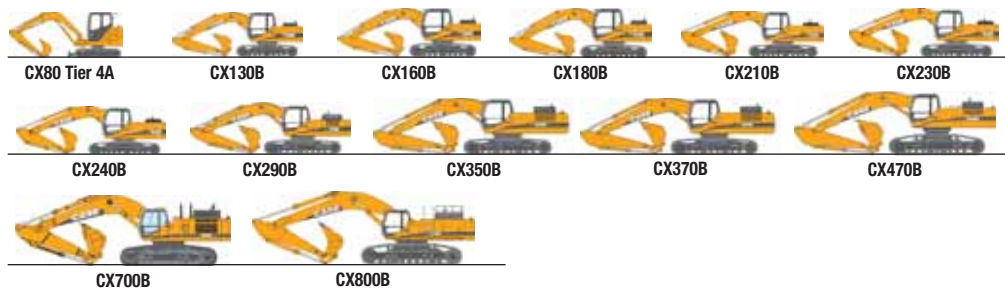
WHEEL LOADERS / PALE GOMMATE / CHARGEUSES SUR PNEUS / RADLADER / CARGADORAS DE NEUMÁTICOS



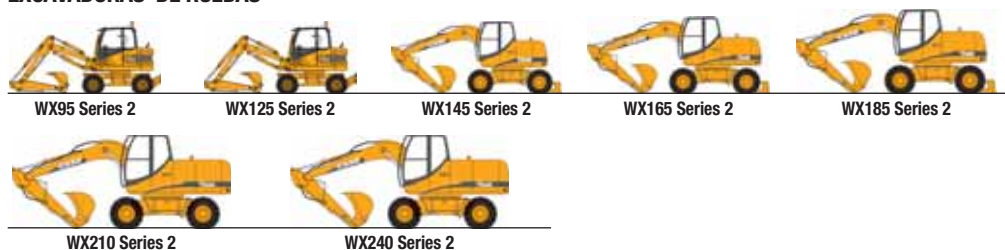
CRAWLER-EXCAVATORS SR / ESCAVATORI CINGOLATI SR / PELLES SUR CHENILLES SR / RAUPENBAGGER SR / EXCAVADORAS DE CADENAS SR



CRAWLER-EXCAVATORS / ESCAVATORI CINGOLATI / PELLES SUR CHENILLES / RAUPENBAGGER / EXCAVADORAS DE CADENAS



WHEELED EXCAVATORS / ESCAVATORI GOMMATI / PELLES SUR PNEUS / MOBILBAGGER / EXCAVADORAS DE RUEDAS



SPECIAL APPLICATIONS / ATTREZZATURE SPECIALI / APPLICATIONS CLIENTÈLE / SONDERAUSRÜSTUNGEN / APLICACIONES ESPECIALES



CX75 Long Reach



CX130B Long Reach



CX210B/CX240B/CX330 Long Reach



CX135SR Tier 4A Forestry



CX225SR Tier 3 Forestry



CX130B Forestry



CX180B Forestry



CX210B Forestry



CX240B Material Handling



WX210B Material Handling



WX240B Material Handling



CX330 HRD (High Reach Demolition)



CX470B HRD (High Reach Demolition)



CX800B HRD (High Reach Demolition)*



CX700B Mass Excavation



CX800B Mass Excavation

* Customised on request - Allestimento su richiesta - Personnalisé sur demande - Anpassung nach Ihren persönlichen Wünschen auf Anfrage- Puede personalizarse, si se solicita

ARTICULATED DUMP TRUCKS / TOMBEREAUX ARTICULES / KNICKGELENKTE MULDENKIPPER / DÚMPERES ARTICULADOS



327B



330B



335B



340B

Not available in all market - Non disponibile in tutti i mercati - Non disponible sur tous les marchés - Nicht in allen Ländern verfügbar - No está disponible en todos los mercados

**MINI-EXCAVATORS / Mini escavatori / Mini-pelles / Minibagger /
Miniexcavadoras**





CX15B

Series 2 one speed canopy



CX15B Series 2



CX17B*

ZTS in canopy version



CX18B* Series 2



CX20B^{ZTS}
CX22B^{ZTS***}**



CX27B^{ZTS}



CX31B^{ZTS}



CX36B^{ZTS}



CX40B^{ZTS}



CX50B^{ZTS}

ZTS: Zero Tail Swing - Rotazione senza sporgenza - Déport arrière nul - Kein Hecküberstand - Radio de giro sobre las cadenas

* Variable chassis * Chassis variable * Voie variable * Variables Chassis * Chasis de anchura variable

** Canopy only - ZTS ** Solo con canopy - ZTS ** Canopy seulement - ZTS ** Nur Schutzdach - ZTS ** Sólo canopy - ZTS

*** Cab only - ZTS *** Solo con cabina - ZTS *** Cabine seulement - ZTS *** Nur Kabine - ZTS *** Sólo cabina - ZTS

*With rubber tracks - *Con cingoli in gomma - *Avec chenilles en caoutchouc - *Mit Gummiketten - *Con cadenas de goma

| | Max weight* Peso max* Poids max* Betriebsgewicht max* Peso max* | Engine type Motore tipo Type de moteur Motor Tipo de motor | Net power Potenza netta Puissance nette Nettleistung Potencia neta | Max. dig depth Profondità max Profondeur max Grabtiefe max Profundidad max |
|----------------------------|---|--|--|--|
| CX15B Series 2 | 1480 kg | Mits. L3E-W231KBS | 11.3 kW/15 hp | 2200/2400 mm |
| CX17B^{ZTS} | 1650 kg | Mits. L3E-W231KBS | 11.3 kW/15 hp | 2150/2370 mm |
| CX18B Series 2 | 1780 kg | Mits. L3E-W231KBS | 11.3 kW/15 hp | 2200/2400 mm |
| CX20B^{ZTS} | 2100 kg | Yanmar 3TNV82A | 17 kW/23 hp | 2650 mm |
| CX22B^{ZTS} | 2550 kg | Yanmar 3TNV82A | 17 kW/23 hp | 2650 mm |
| CX27B^{ZTS} | 2630 kg | Yanmar 3TNV82A | 17 kW/23 hp | 2790 mm |
| CX31B^{ZTS} | 3140 kg | Yanmar 3TNV88A | 22 kW/30 hp | 3100 mm |
| CX36B^{ZTS} | 3720 kg | Yanmar 3TNV88A | 22 kW/30 hp | 3350 mm |
| CX40B^{ZTS} | 4340 kg | Yanmar 4TNV88A | 32 kW/43 hp | 3660 mm |
| CX50B^{ZTS} | 4770 kg | Yanmar 4TNV88A | 32 kW/43 hp | 3900 mm |

SKID STEER LOADERS / Pale compatte / Chargeuses compactes / Kompaktlader / Minicargadoras





**COMPACT TRACKED SKID STEER / MINI PALE COMPATTE CINGOLATE / CHARGEUSES COMPACTES RIGIDES /
RAUPEN-KOMPAKTLADER / MINICARGADORA COMPACTA DE CADENAS**



| | Max weight Peso max Poids max Betriebsgewicht max Peso máximo | Engine type Motore tipo Type de moteur Motor Tipo de motor | Net power Potenza netta Puissance nette Nettoleistung Potencia neta | Operating load Carico utile Charge utile Nutzlast Carga operativa |
|-----------------------|---|--|---|---|
| 410 Series 3 | 2463 kg | IHI Shibaura/2.21 l/turbo | 45 kW/60 hp | 680 kg |
| 420 Series 3 | 2996 kg | Iveco/3.2 l/turbo | 55 kW/74 hp | 839 kg |
| 430 Series 3 | 3084 kg | Iveco/3.2 l/turbo | 61 kW/82 hp | 907 kg |
| 435 Series 3 | 3075 kg | Iveco/3.2 l/turbo | 61 kW/82 hp | 998 kg |
| 440 Series 3 | 3193 kg | CNH/4.5 l/turbo | 67 kW/90 hp | 998 kg |
| 445 Series 3 | 3683 kg | Iveco/3.2 l/turbo | 61 kW/82 hp | 1134 kg |
| 420CT Series 3 | 3783 kg | Iveco/3.2 l/turbo | 55 kW/74 hp | 1297 kg |
| 440CT Series 3 | 4048 kg | CNH/4.5 l/turbo | 67 kW/90 hp | 1361 kg |
| 445CT Series 3 | 4630 kg | Iveco/3.2 l/turbo | 61 kW/82 hp | 1497 kg |

**BACKHOE LOADERS / Terne / Chargeuses pelleteuses / Baggerlader /
Retrocargadoras**





580 Super R Series 3
Side shift*



580 Super R + Series 3
Side shift*



590 Super R Series 3
Side shift*



695 Super R Series 3
Side shift or Centermount**

*Powershuttle or Powershift - Pilot or Mechanical control - Extendible or Standard dipper

*Trasmissioni Powershuttle o Powershift - Comandi meccanici o servocomandi - Bilanciere estensibile o std

*Powershuttle ou Powershift - Commande mécanique ou système Pilot Control - Balancier standard ou extensible

*PowerShuttle oder PowerShift - "Pilot Control"-Steuerung oder Mechanische Steuerung - teleskopierbarer Löffelstiel oder Standard-Löffelstiel

**Powershuttle o Powershift - Control mecánico o pilotado - Brazos de balancin estándar o extensibles

**Powershift - Backhoe centermount - **Trasmissione Powershift -Retroescavatore montatocentralmente - **Powershift - pelle retro

** PowerShift - Heckbagger mittig montiert - **Powershift - montaje central de retro

*Extended dipper - *Bilanciere esteso - *Balancier sorti - *Teleskopstiel ausgefahren - *Balancin extendido

| | Maximum weight Peso max Poids max Betriebsgewicht max Peso max | Engine type Motore tipo Type de moteur Motor Tipo de motor | Net power Potenza netta Puissance nette Nettoleistung Potencia neta | Loader bucket capacity Capacità benna Capacité godet chargeur Lader Schaufelinhalt Capacidad de la cuchara | Backhoe digging depth Profondità max di scavo Profon. de fouille en rétro Heckbagger Grabtiefe Profund. de excavación |
|-------------------------------|--|--|---|--|---|
| 580 Super R Series 3 | 8140 kg | CNH/4.5 l/turbo | 72 kW/97 hp | 1000 l | 4.61/5.80* m |
| 580 Super R + Series 3 | 8140 kg | CNH/4.5 l/ common rail | 72 kW/97 hp | 1000 l | 4.61/5.80* m |
| 590 Super R Series 3 | 8140 kg | CNH/4.5 l/ common rail | 82 kW/110 hp | 1000 l | 4.61/5.80* m |
| 695 Super R Series 3 | 8800 kg | CNH/4.5 l/ common rail | 82 kW/110 hp | 1200 l | 4.62/5.81* m |

**COMPACT WHEEL LOADERS / Pale gommate compatte /
Petites chargeuses sur pneus / Kleine radlader /
Midi cargadoras de neumáticos**





21E Series 3



121E/121E HS*
Series 3



221E/221E HS*
Series 3



321E/321E HS*
Series 3

*High speed option - *Opzione alta velocità - *High speed option - * Zweite Fahrstufe als optionale Sonderausstattung -
*Opción de alta velocidad

| | Maximum weight Peso max Poids max Betriebsgewicht max Peso max | Engine type Motore tipo Type de moteur Motor Tipo de motor | Net power Potenza netta Puissance nette Nettleistung Potencia neta | Bucket capacity Capacità benne Capacité de godets Schaufelinhalt Capacidad cucharas |
|----------------------|--|--|--|---|
| 21E Series 3 | 4624 kg | Iveco/3.2 l/turbo | 41 kW/54 hp | 700/800 l |
| 121E Series 3 | 4920 kg | Iveco/3.2 l/turbo | 48 kW/64 hp | 800/900 l |
| 221E Series 3 | 5418 kg | Iveco/3.2 l/turbo | 55 kW/74 hp | 900/1000 l |
| 321E Series 3 | 5771 kg | Iveco/3.2 l/turbo | 61 kW/82 hp | 1000/1200 l |

**WHEEL LOADERS / Pale gommate / Chargeuses sur pneus /
Radlader / Cargadoras de neumáticos**





521E

521E^{XT}

621E

621E^{XT}621E^{XR}

721E

721E^{XT}721E^{XR}

821E

821E^{XR}

921E

921E^{XR}

1221E

1221E^{XR}

Maximum weight

Peso max

Poids max

Betriebsgewicht max

Peso max

Engine type

Motore tipo

Type de moteur

Motor

Tipo de motor

Net power

Potenza netta

Puissance nette

Nettleistung

Potencia neta

Bucket capacity

Capacità benne

Capacité de godets

Schaufelinhalt

Capacidad cucharas

521E

10464 kg

CASE 445TA/EGE

106 kW/142 hp

1700/1900 l

521E^{XT}

11906 kg

CASE 445TA/EGE

106 kW/142 hp

1600/1800 l

621E

12431 kg

CASE 667TA/EDB

128 kW/172 hp

1960/2290 l

621E^{XT}

13022 kg

CASE 667TA/EDB

128 kW/172 hp

1960/2400 l

621E^{XR}

12521 kg

CASE 667TA/EDB

128 kW/172 hp

1960/2290 l

721E

14500 kg

CASE 667TA/EED

137 kW/183 hp

2400/2700 l

721E^{XT/XR}

14650 kg

CASE 667TA/EED

137 kW/183 hp

2400/2700 l

821E/E^{XR}

17166 kg

CASE 667TA/EBD

159 kW/213 hp

2800/3300 l

921E/E^{XR}

22962/24062 kg

Cummins QSM 11

221 kW/297 hp

3820/4600 l

1221E

30940 kg

Cummins QSM 11

239 kW/320 hp

4800/7000 l

1221E^{XR}

30020 kg

Cummins QSM 11

239 kW/320 hp

4800/7000 l

**TELESCOPIC HANDLERS / Movimentatori telescopici / Chargeuses
telescopiques / Teleskoplader / Manipuladoras telescópicas**





* Narrow stabs. - Stabilizzatori stretti - Stabilisateurs étroits - Schmale Abstützung - Estabilizadores estrechos

** No stabs. - Senza stabilizzatori - Sans stabilisateurs - Ohne Abstützung - Sin estabilizadores

*** Wide stabs. Man platform compatible - Stabilizzatori larghi. Predisposizione per navicella porta-persone- Stabilisateurs larges. Compatible avec une plate-forme - Breiten Abstützung. Für Arbeitsplattform vorbereitet - Estabilizadores anchos. Compatible con plataformas tripuladas

| | Engine type Motore tipo Type de moteur Motor Tipo de motor | Net power Potenza netta Puissance nette Nettoleistung Potencia neta | Maximum lift height Altezza max sollevamento Hauteur de levage max Maximale Hubhöhe Altura max de elevación | Max lift capacity Capacità sollev. max Capacité de levage max Max Tragfähigkeit Capacidad max de carga | Max. reach Sbraccio max Portée max Reichweite max Alcance max |
|----------------------------------|--|---|---|--|---|
| TX130-33 turbo Tier 3 | CNH/4,5 l/ turbo aftercooled | 74 kW/99 hp | 13.00 m | 3300 kg | 8.75 m |
| TX130-40 turbo Tier 3 | CNH/4,5 l/ turbo aftercooled | 88 kW/118 hp | 12.30 m | 4000 kg | 8.65 m |
| TX130-45 turbo Tier 3 | CNH/4,5 l/ turbo aftercooled | 88 kW/118 hp | 12.45 m | 4500 kg | 8.65 m |
| TX140-45 turbo Tier 3 | CNH/4,5 l/ turbo aftercooled | 88 kW/118 hp | 13.55 m | 4500 kg | 9.33 m |
| TX170-45 turbo Tier 3 | CNH/4,5 l/ turbo aftercooled | 88 kW/118 hp | 16.60 m | 4500 kg | 12.54 m |

CRAWLER-EXCAVATORS SR / Escavatori cingolati SR / Pelles sur chenilles SR / Raupenbagger SR / Excavadoras de cadenas SR





CX75SR Tier 4A



CX135SR Tier 3



CX225SR Tier 3

| | Max weight Peso max Poids max Betriebsgewicht max Peso max | Engine type Motore tipo Type de moteur Motor Tipo de motor | Net power Potenza netta Puissance nette Nettoleistung Potencia neta | Max reach Sbraccio max Portée max Reichweite max Alcance max | Max digging depth Profondità max Profondeur max Grabtiefe max Profundidad max |
|---------------------------|--|--|---|--|---|
| CX75SR Tier 4A | 8290 kg | Isuzu AU-4LE2X | 40 kW/54 hp | 6.90 m | 4.54 m |
| CX135SR | 14500 kg | Isuzu AJ-4JJ1X | 70.9 kW/95 hp | 8.57 m | 5.93 m |
| CX225SR | 24400 kg | Isuzu AI-4HK1X | 114.4 kW/153 hp | 9.91 m | 6.70 m |

**CRAWLER-EXCAVATORS / Escavatori cingolati / Pelles sur chenilles /
Raupenbagger / Excavadoras de cadenas**





CX80 Tier 4A



CX130B



CX160B



CX180B



CX210B



CX230B



CX240B



CX290B



CX350B



CX370B



CX470B



CX700B



CX800B

| | Max weight Peso max Poids max Betriebsgewicht max Peso max | Engine type Motore tipo Type de moteur Motor Tipo de motor | Net power Potenza netta Puissance nette Nettleistung Potencia neta | Max reach Sbraccio max Portée max Reichweite max Alcance max | Max dig depth Profondità max Profondeur max Grabtiefe max Profundidad max |
|---------------------|--|--|--|--|---|
| CX80 Tier 4A | 8470 kg | Isuzu AU-4LE2X | 39 kW/53 hp | 7.40 m | 4.59 m |
| CX130B | 14300 kg | Isuzu AJ-4JJ1X | 70.9 kW/96 hp | 8.31 m | 5.54 m |
| CX160B | 16700 kg | Isuzu AI-4JJ1X | 89.2 kW/120 hp | 9.38 m | 6.47 m |
| CX180B | 17900 kg | Isuzu AI-4JJ1X | 89.2 kW/120 hp | 9.38 m | 6.47 m |
| CX210B | 21300 kg | Isuzu AI-4HK1X | 117 kW/157 hp | 9.90 m | 6.65 m |
| CX230B | 22700 kg | Isuzu AI-4HK1X | 117 kW/157 hp | 9.90 m | 6.59 m |
| CX240B | 24500 kg | Isuzu AH-4HK1X | 132 kW/177 hp | 10.79 m | 7.42 m |
| CX290B | 29100 kg | Isuzu AH-6HK1XYSS | 154 kW/206 hp | 11.16 m | 7.58 m |
| CX350B | 34200 kg | Isuzu AH-6HK1XYSS | 202 kW/275 hp | 11.90 m | 8.14 m |
| CX370B | 36200 kg | Isuzu AH-6HK1XYSS | 202 kW/275 hp | 11.17 m | 7.34 m |
| CX470B | 48100 kg | Isuzu AH-6UZ1XYSS | 270 kW/362 hp | 11.74 m | 7.57 m |
| CX700B | 68900 kg | Isuzu AH-6WG1XYSS | 345 kW/463 hp | 14.60 m | 9.85 m |
| CX800B | 80400 kg | Isuzu AH-6WG1XYSS-02 | 397 kW/532 hp | 16.11 m | 10.56 m |

WHEELED EXCAVATORS / Escavatori gommati / Pelles sur pneus / Mobilbagger / Excavadoras de ruedas





WX95 Series 2



WX125 Series 2



WX145 Series 2



WX165 Series 2



WX185 Series 2



WX210 Series 2



WX240 Series 2

| | Max weight Peso max Poids max Betriebsgewicht max Peso max | Engine type Motore tipo Type de moteur Motor Tipo de motor | Net power Potenza netta Puissance nette Nettoleistung Potencia neta | Max dig depth Profondità max Profondeur max Grabtiefe max Profundidad max | Max reach Sbraccio max Portée max Reichweite max Alcance max |
|-----------------------|--|--|---|---|--|
| WX95 Series 2 | 10000 kg | CASE 445TA/MNB | 74 kW/99 hp | 4.3 m | 8.3 m |
| WX125 Series 2 | 12600 kg | CASE 445TA/MLL | 84 kW/118 hp | 4.8 m | 9 m |
| WX145 Series 2 | 16500 kg | CASE 445TA/MLH | 90 kW/121 hp | 5.5 m | 8.9 m |
| WX165 Series 2 | 18500 kg | CASE 667TA/MEC | 105 kW/141 hp | 6.0 m | 9.3 m |
| WX185 Series 2 | 20450 kg | CASE 667TA/MEB | 118 kW/158 hp | 6.0 m | 9.6 m |
| WX210 Series 2 | 22000 kg | CASE 667TA/MEE | 129 kW/173 hp | 6.2 m | 10 m |
| WX240 Series 2 | 23100 kg | CASE 667TA/MEE | 129 kW/173 hp | 6.4 m | 10.2 m |

**SPECIAL APPLICATIONS / Attrezzature speciali / Applications clientèle /
Sonderausrüstungen / Aplicaciones especiales**





CX75 Long Reach



CX130B Long Reach



CX210B/CX240B/CX330 Long Reach



CX135SR Tier 4A Forestry



CX225SR Tier 3 Forestry



CX130B Forestry



CX180B Forestry



CX210B Forestry



CX240B Material Handling



WX210B Material Handling



WX240B Material Handling



CX330 HRD (High Reach Demolition)



CX470B HRD (High Reach Demolition)



CX800B HRD (High Reach Demolition)*



CX700B Mass Excavation



CX800B Mass Excavation

* Customised on request - Allestimento su richiesta - Personnalisé sur demande - Anpassung nach Ihren persönlichen Wünschen auf Anfrage - Puede personalizarse, si se solicita

Max height
Altezza max
Hauteur maxi
Max Arbeitshöhe
Altura max

Max reach
Sbraccio max
Portée max
Max Reichweite
Alcance max

Max dig depth
Profon. max di scavo
Profondeur portée max
Max Grabtiefe
Profundidad máxima

Attachment weight
Peso attrezzatura
Poids de l'équipement
Gewicht Anbauwerkzeug
Peso del equipo

Bucket capacity
Capacità benna
Capacité du godet
Schaufelinhalt
Capacidad cuchara

Demolition

| | | | | | |
|--------------------|---------|---------|---|---------|---|
| CX330 HRD | - | 11.1 m | - | 2500 kg | - |
| CX470B HRD | 27.17 m | 14.24 m | - | 3000 kg | - |
| CX800B HRD* | - | - | - | - | - |

Long reach

| | | | | | |
|------------------|--------|---------|---------|---|---------------------|
| CX75 LR | 9.25 m | 8.23 m | 6.41 m | - | 0.19 m ³ |
| CX130B LR | 12 m | 13. m | 10.13 m | - | 0.28 m ³ |
| CX210B LR | 13 m | 15.49 m | 12 m | - | 0.37 m ³ |
| CX240B LR | 14 m | 18.32 m | 14.56 m | - | 0.37 m ³ |
| CX330B LR | 15.2 m | 21.05 m | 16.77 m | - | 0.45 m ³ |

Material handling

| | | | | | |
|-----------------------|---------|---------|-----|---------|---|
| CX240B MH | 12.63 m | 11.58 m | - | 1600 kg | - |
| WX210 Series 2 | 13 m | 12 m | 4 m | 1500 kg | - |
| WX240 Series 2 | 13 m | 12 m | 4 m | 1600 kg | - |

Mass excavation

| | | | | | |
|---------------|---------|---------|--------|---|------------------|
| CX700B | - | 11.75 m | 7.18 m | - | 4 m ³ |
| CX800B | 11.76 m | 12.31 m | 7. m | - | 5 m ³ |

Forestry

| | | | | | |
|-----------------|---|---|---|---------|---|
| CX135 SR | - | - | - | 570 kg | - |
| CX225 SR | - | - | - | 1280 kg | - |
| CX130B | - | - | - | 570 kg | - |
| CX180B | - | - | - | 790 kg | - |
| CX210B | - | - | - | 1280 kg | - |

ARTICULATED DUMP TRUCKS / Tombereaux Articules / Knickgelenkte muldenkipper / Dúmperes articulados





Not available in all market - Non disponibile in tutti i mercati - Non disponible sur tous les marchés - Nicht in allen Ländern verfügbar - No está disponible en todos los mercados

| | Engine Horsepower Puissance moteur Motorleistung Potencia del motor | Engine type Type de moteur Motor Tipo de motor | Payload Charge utile Nutzlast Carqa útil | Heaped capacity Capacité nominale Muldeninhalt gehäuft Capac. con montón | Total laden weight Poids total en charge Gesamtgewicht Peso total cargado |
|-------------|--|---|---|---|--|
| 327B | 235 kW/315 hp | CASE Family IV | 24650 kg | 14.5 m ³ | 46890 kg |
| 330B | 260 kW/349 hp | CASE Family IV | 28160 kg | 17.6 m ³ | 50730 kg |
| 335B | 306 kW/410 hp | CASE Family IV | 31500 kg | 20.0 m ³ | 60000 kg |
| 340B | 340 kW/456 hp | CASE Family IV | 36000 kg | 22.0 m ³ | 65000 kg |



The call is free from a land line.
Check in advance with your Mobile
Operator if you will be charged.

NOTE: Standard and optional fittings
can vary according to the demands
and specific regulations of each
country. The illustrations may
include optional rather than standard
fittings - consult your Case dealer.
Furthermore, CNH reserves the right
to modify machine specifications
without incurring any obligation
relating to such changes.



Conforms to directive 98/37/CE

Case Construction Equipment Contact Information

CNH UK Ltd

Unit 4,
Hayfield Lane Business Park,
Field Lane, Auckley,
Doncaster,
DN9 3FL
Tel. 00800-2273-7373
Fax +44 1302 802829

CNH France, S.A.

Centre d'Affaires EGB
5, avenue Georges Bataille
BP 40401
60671 Le Plessis-Belleville Cedex
FRANCE
Tél. +33 (0)3 44742100
Fax +33 (0)3 44742331

CNH Deutschland GmbH

Benzstr.1-3
D-74076 Heilbronn
Tel.+49.(0)7131.6449-0
Fax +49.(0)7131.6449.181

CNH Maquinaria Spain, S.A.

Av. José Garate, 11
28820 Coslada - Madrid
Teléfono 916603800
Fax 916736363

CNH Italia Spa

Strada di Settimo, 323
10099 San Mauro (TO)
Fax +39 011 00 77 510

