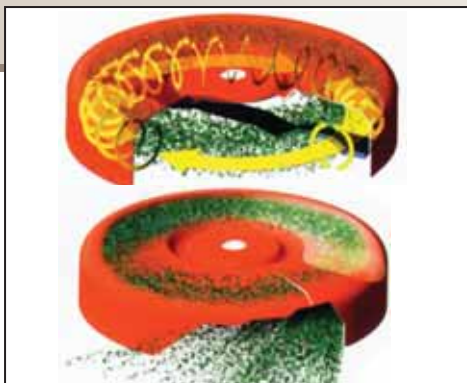


## AR3



**The Jacobsen AR3 rotary deck trim mower is ideal for maintaining tricky bunker and tee surround areas, with new Trim Tek decks for an improved finish. The full-time all wheel drive and weight transfer control puts power in your hands to handle the toughest terrain.**

The rear-mounted engine reduces noise and offers increased operator visibility. The walk-through operator platform allows easy access for the user from either side of the machine. Maintenance free hydraulic wet disc brakes with an emergency fail safe mechanism ensure that the machine stops effectively and stays stopped, even on severe inclines. The ability to convert from mulching deck to rear discharge deck allows for maximum versatility.



Trim Tek decks allow operator to handle heavy volumes of grass while maintaining a high quality of cut

**Power:** 24.5 kw (32.8 hp)

**Cutting Width:** 1.71 m (67.5"), 1.83 m (72")

**Drive System:** Permanent 3 wheel drive

**Special Features:** Trim Tek decks

**Ransomes Jacobsen Ltd**

West Road, Ipswich, IP3 9TT UK

Tel: +44 (0) 1473 270000

Web: [www.ransomesjacobsen.com](http://www.ransomesjacobsen.com)



# AR3 Technical Data

<b>Power (Diesel)</b>	Engine:	Kubota D1105T 3 cylinder (in line) turbocharged Diesel engine 4 stroke, water cooled	
	Power:	24.5kw (32.8 hp) @ 3000 rpm	
	Displacement:	1123 cc	
	Starting System:	12V electric start	
	Fuel Capacity:	45.4 l (10 Imp gal)	
<b>Drive train</b>	Traction Drive:	Full time 3-wheel drive, direct coupled variable displacement pump to direct coupled 200 cc/rev front 400 cc/rev rear wheel motor	
	Cutting Unit Drive:	Fixed displacement hydraulic motors	
<b>Speed</b>	(maximum)		
	Cutting:	0 to 9.5 km/h (0 to 5.9 mph)	
	Transport:	0 to 14 km/h (0 to 8.7 mph)	
	Reverse:	0 to 6 km/h (0 to 3.7 mph)	
	Hydraulic Tank Capacity:	25 l (5.5 imp gal)	
	Grade of Hydraulic Oil:	Greenscare Biodegradable Oil	
<b>Instruments</b>	Lamps: Blocked hydraulic filter warning, charge warning, engine coolant temperature warning, engine oil pressure warning, control module fault warning, engine preheat indicator. Multi-function gauge		
<b>Controls</b>	Switches: starter key, working light, parking brake, cutter, weight transfer Throttle control lever, joystick unit lift/lower, traction foot pedal, parking brake release valve, transport latches		
<b>Brakes</b>	Service: Hydrostatic braking	Parking: Hydraulic parking brake on front wheels	
<b>Tyres</b>	Front: 20 x 12.00 - 10 Turf Trac 4pr	Rear: 20 x 10.00 - 8 Turf Trac 4pr	
<b>Steering</b>	Hydrostatic power steering with adjustable tilt steering wheel		
<b>Dimensions</b>	Width of Cut:	1.71 m (67.5")	1.83 m (72")
	Transport Width:	2.00 m (79")	
	Height:	1.34 m (52.7")	
	Height with ROPS:	1.85 m (72.8")	
	Length:	3.12 m (123")	
	Weight:	1040 kg (2293 lb)	
	Ground Pressure:	1 kg/cm <sup>2</sup>	
	Wheel Track Width:	1.33 m (52.4")	
	Wheel Base:	1.5 m (59")	
<b>Cutting</b>	Cutting Units: Rotary Trim tek decks		
	Type:	Three 686 mm (27") rotary mulching/rear discharge decks	
	Weight Transfer:	Units balanced with hydraulic weight transfer	
<b>Productivity</b>	Cutting Unit Lift:	Cutting unit lift lever with automatic shut off and safety interlock restart	
	Cutting Blades:	Rear discharge, low lift blade	
	Height of Cut:	From 6 mm to 89 mm (0.75" to 3.5") in 6 mm (0.25") increments	
	Clip Rate:	1.62 hectares/hour at 9.5 km/h (3.96 acres/h at 6 mph) 10% allowance is included for normal overlaps and turning at the end of each cut	
<b>Rollers</b>	Rear	102 mm (4") diameter smooth roller	
<b>Operator Noise</b>	89 dB(A)Leq		
<b>Vibration Levels</b>	1.69 m/s <sup>2</sup>		
<b>Emissions</b>	Measured sound power: 104 dB(A)LWA (rear discharge), 105 dB(A)LWA (mulching)		
<b>Optional Equipment</b>	Grammer air suspension seat, work lights		

## Ransomes Jacobsen Ltd

West Road, Ipswich, IP3 9TT UK

Tel: +44 (0) 1473 270000

Web: [www.ransomesjacobsen.com](http://www.ransomesjacobsen.com)



**When Performance Matters®**